

Supplementary file for: Conradi M. 2014. Three artotrogids (Crustacea: Copepoda: Siphonostomatoida) from the Ross Sea, Antarctica. *Polar Research* 33. Correspondence: Mercedes Conradi, Marine Biology Laboratory, Department of Zoology, Faculty of Biology, University of Seville, Reina Mercedes 6, ES-41012 Sevilla, Spain.

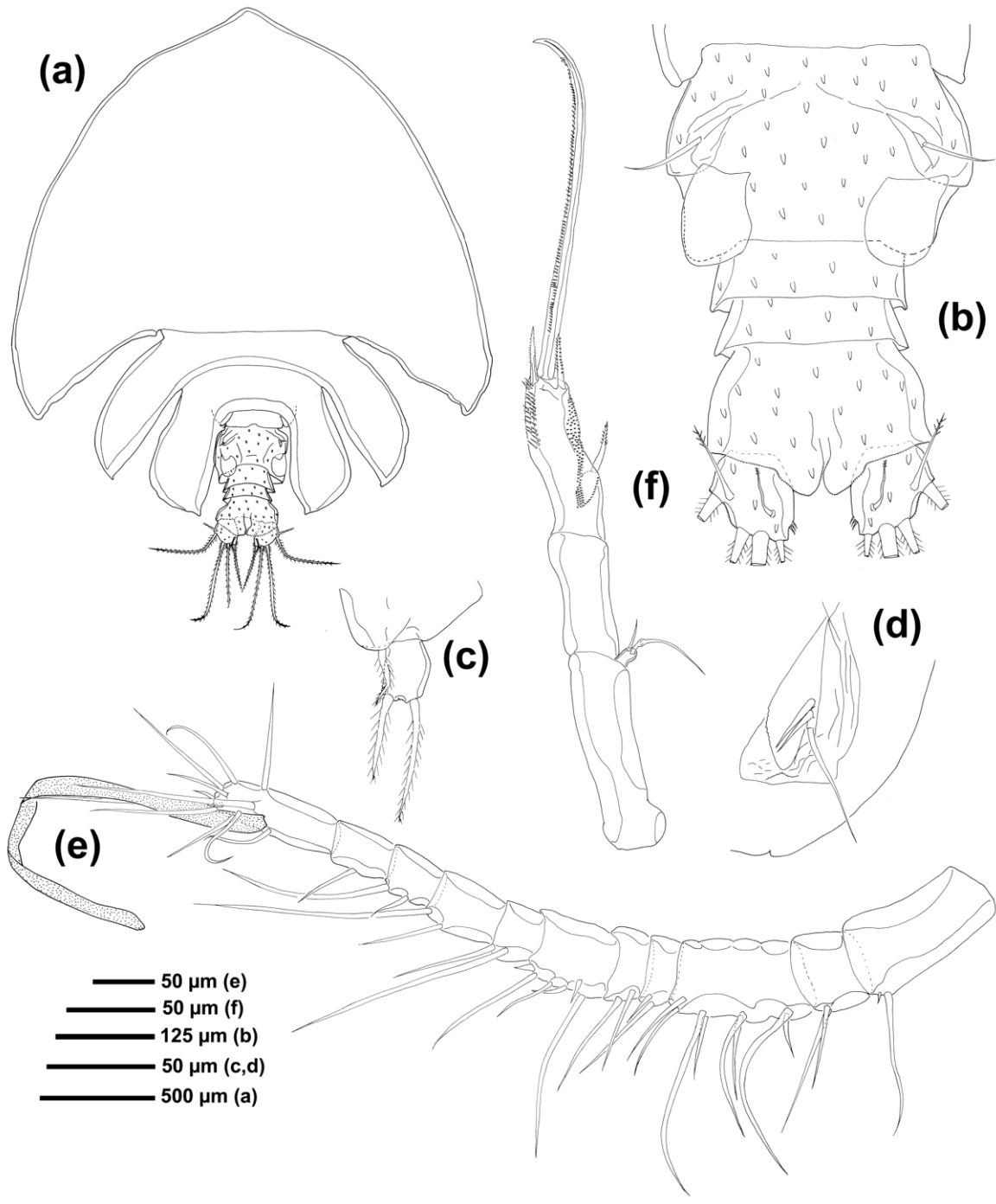


Fig. 2. *Neobradypontius neglectus* Eiselt, 1961 (female): (a) habitus, dorsal; (b) urosome, dorsal; (c) leg 5; (d) genital area; (e) antennule; (f) antenna.

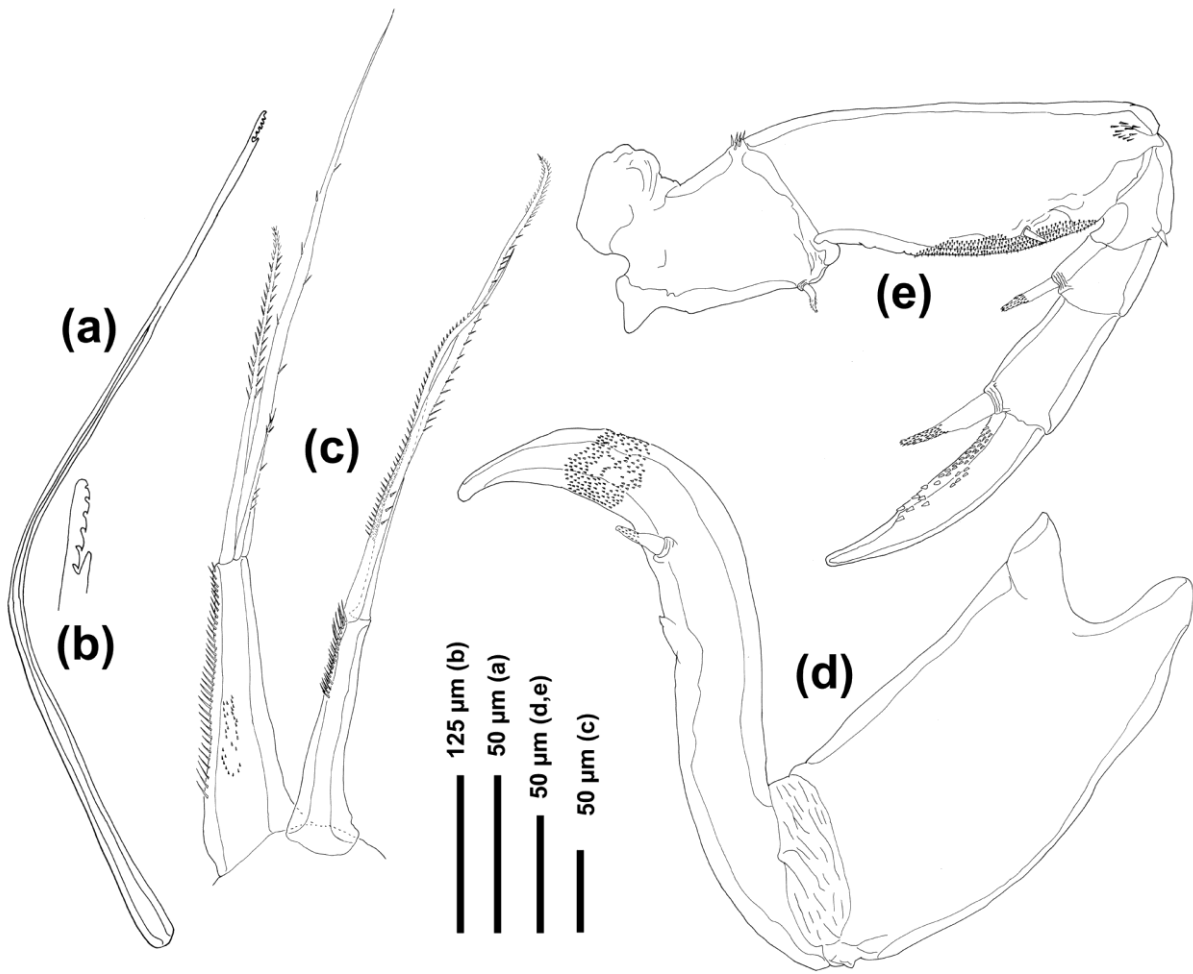


Fig. 3. *Neobradypontius neglectus* Eiselt, 1961 (female): (a) mandible; (b) distal part of mandible; (c) maxillule; (d) maxilla; (e) maxilliped.

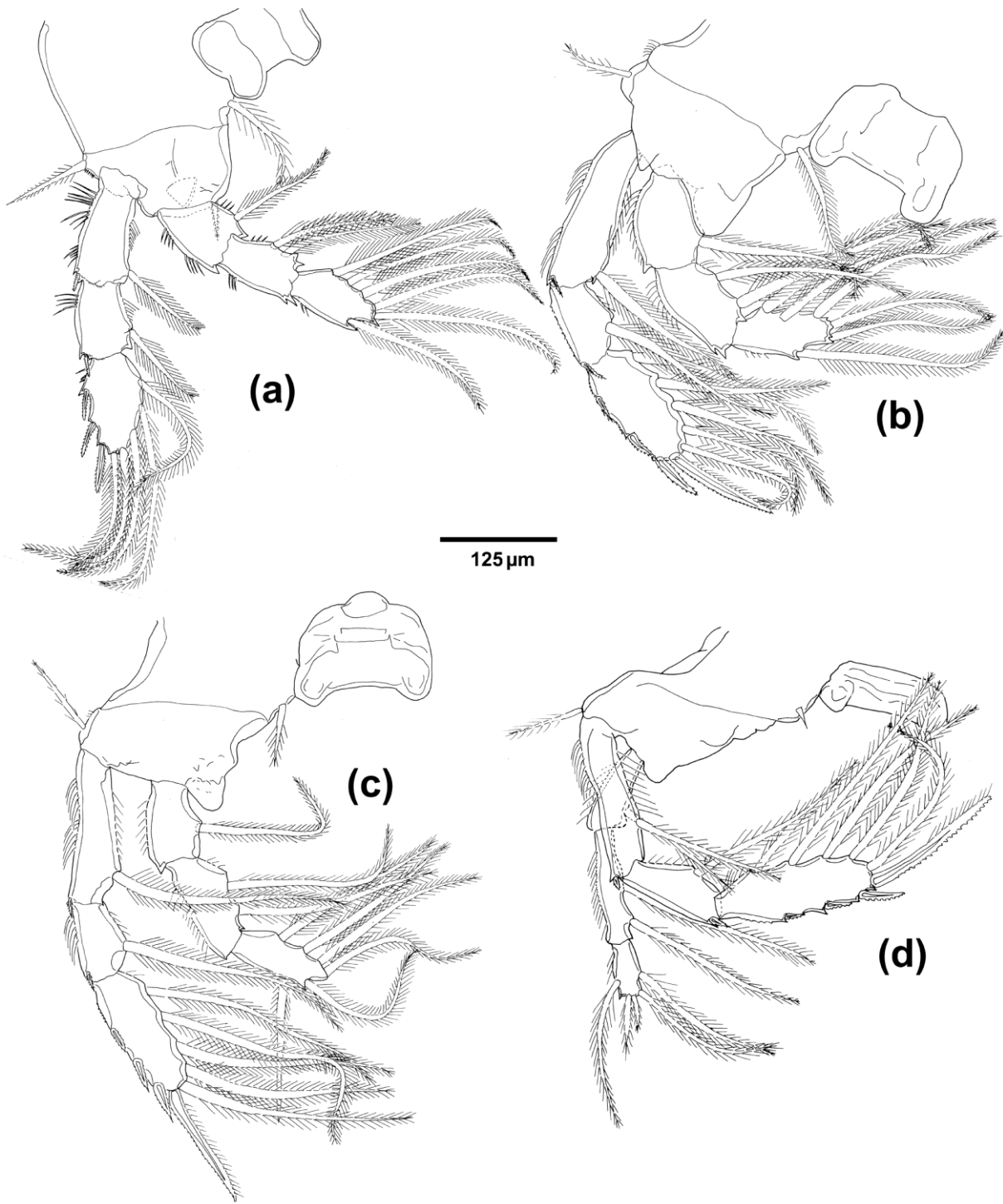


Fig. 4. *Neobradypontius neglectus* Eiselt, 1961 (female): (a) leg 1; (b) leg 2; (c) leg 3; (d) leg 4.

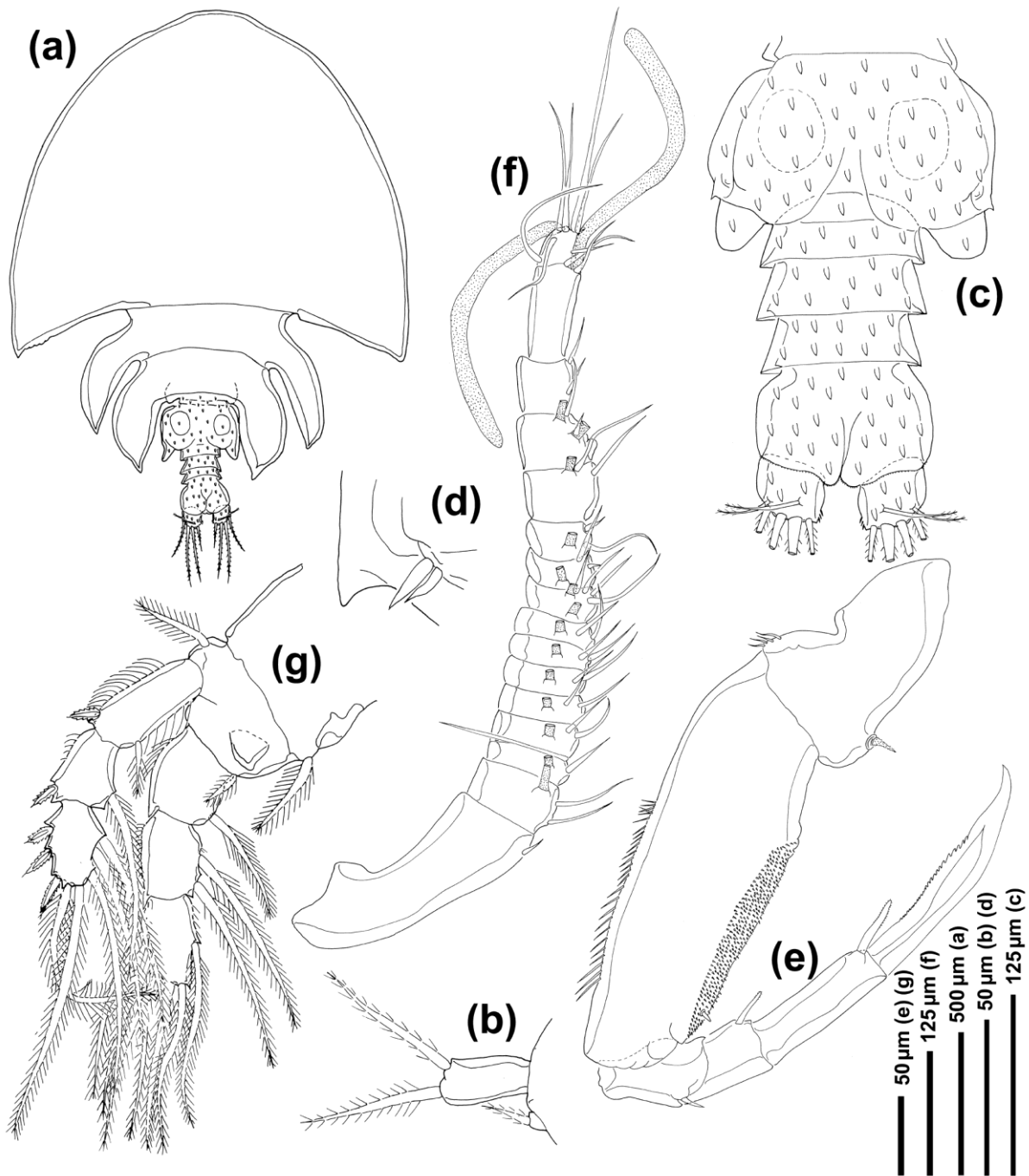


Fig. 5. *Neobradypontius neglectus* Eiselt, 1961 (male): (a) habitus, dorsal; (b) leg 5; (c) urosome, dorsal; (d) leg 6; (e) maxilliped; (f) antennule; (g) leg 1

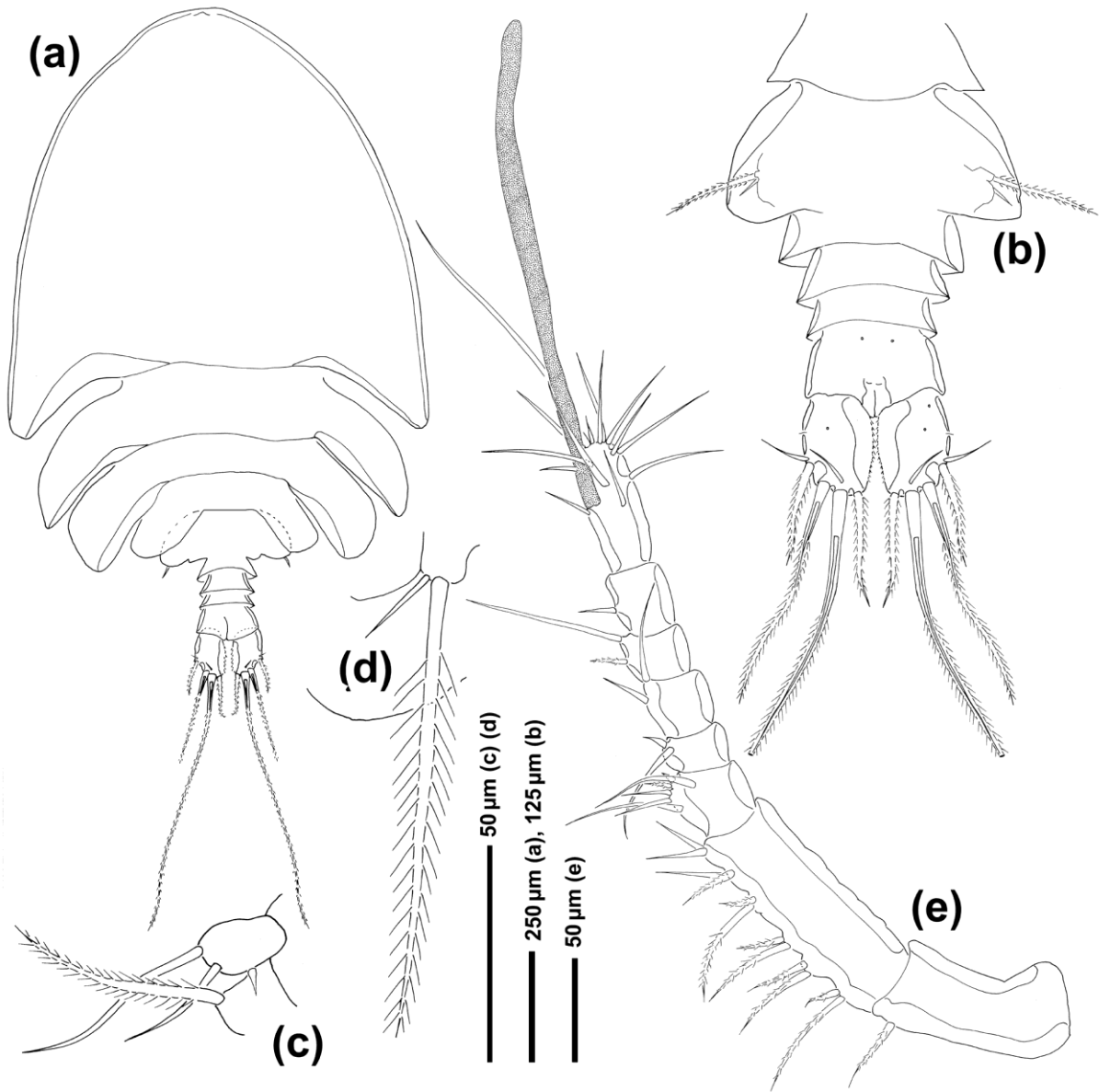


Fig. 6. *Cryptopontius latus* (Brady, 1910) (female): (a) habitus, dorsal; (b) urosome dorsal; (c) leg 5; (d) genital area; (e) antennule.

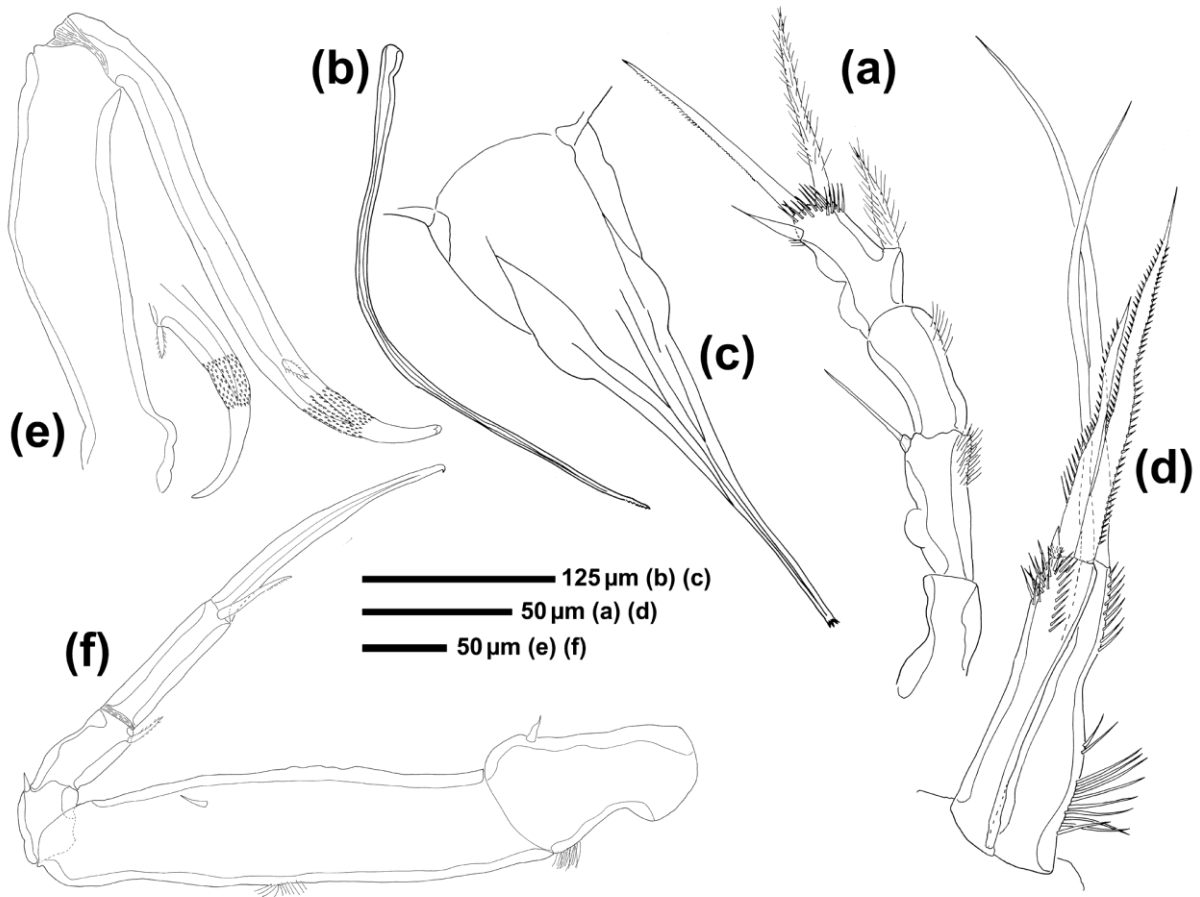


Fig. 7. *Cryptopontius latus* (Brady, 1910) (female): (a) antenna; (b) mandible; (c) siphon, (d) maxillule; (e) maxilla; (f) maxilliped.

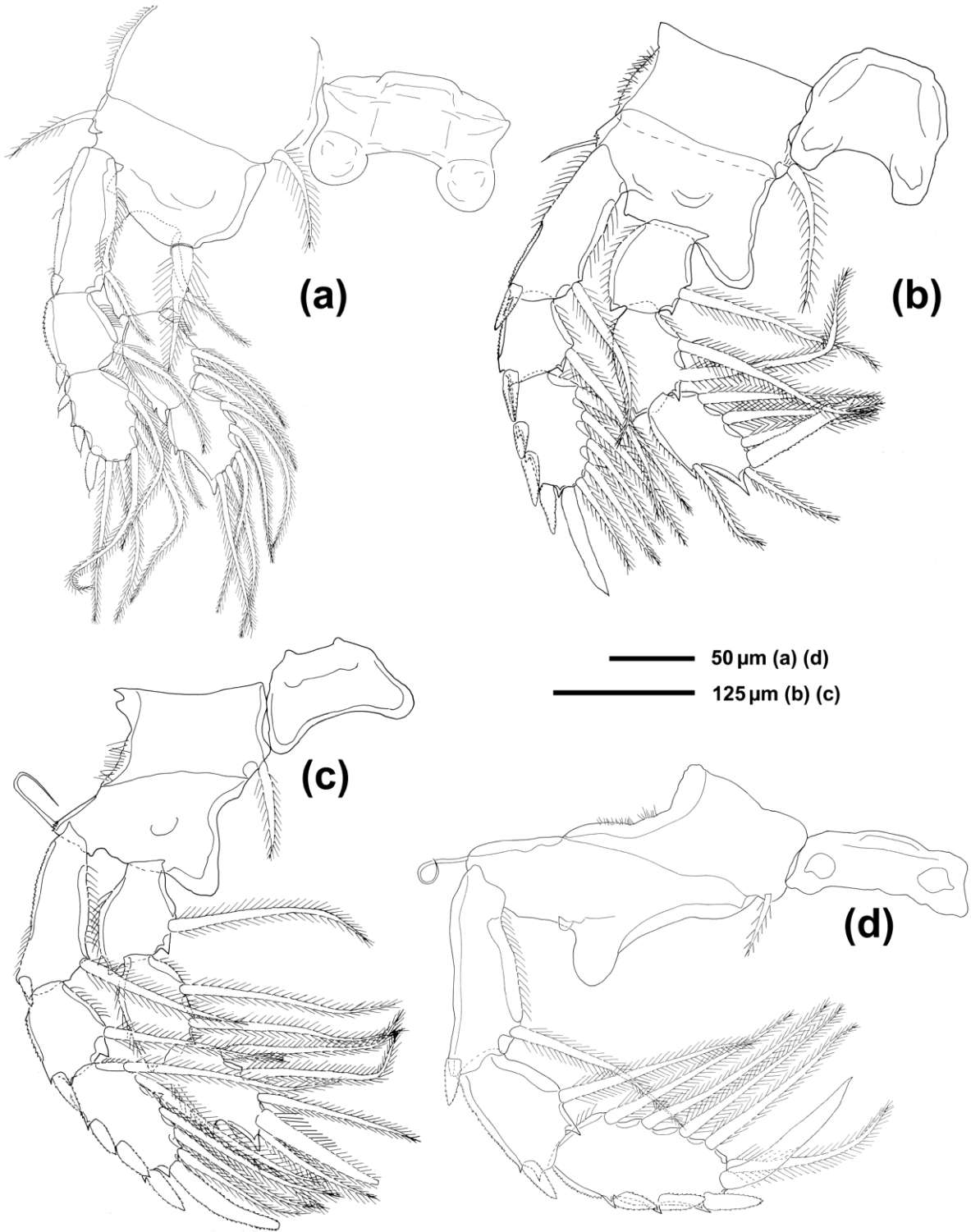


Fig. 8. *Cryptopontius latus* (Brady, 1910) (female): (a) leg 1; (b) leg 2; (c) leg 3; (d) leg 4.

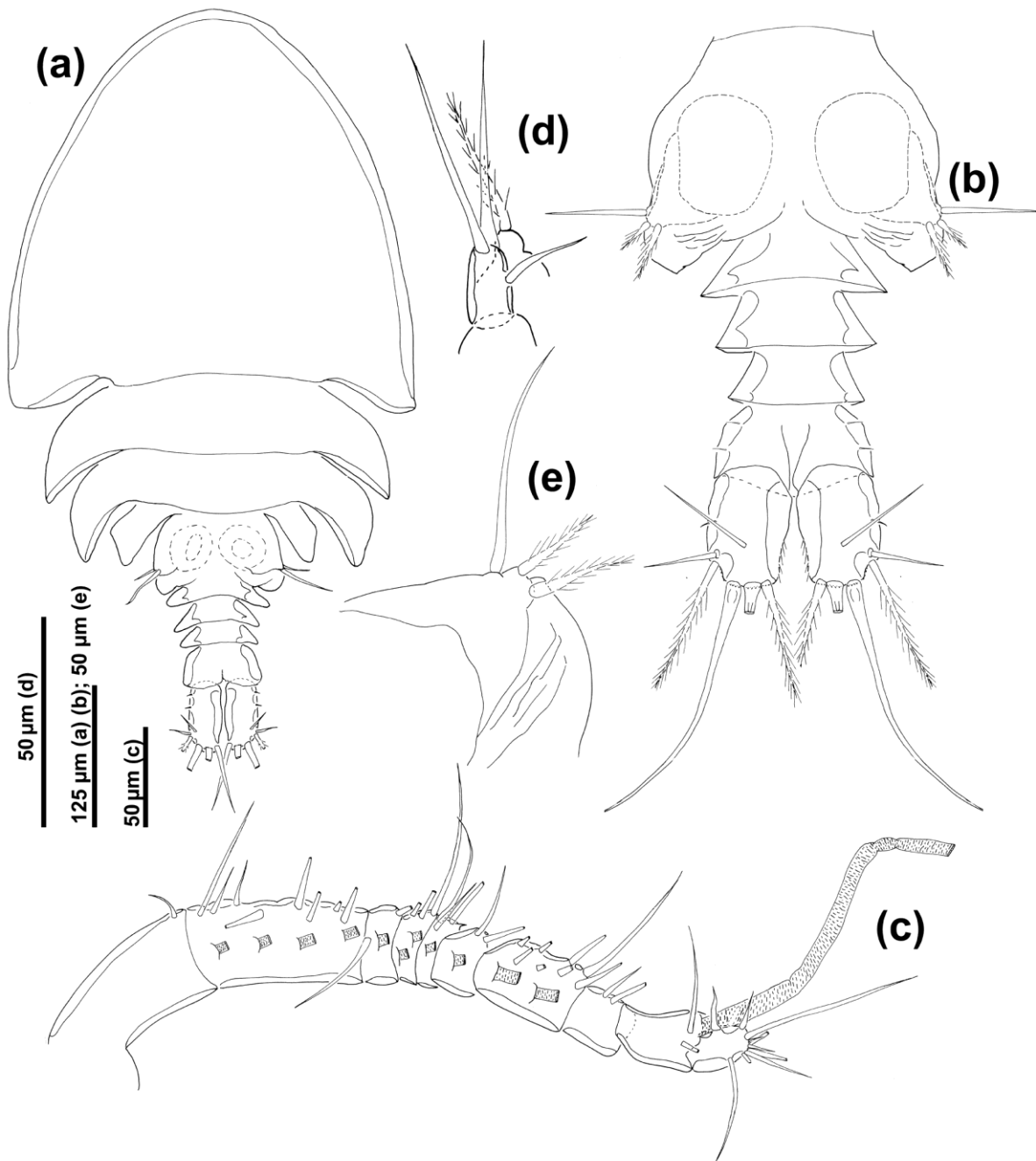


Fig. 9. *Cryptopontius latus* (Brady, 1910) (male): (a) habitus, dorsal; (b) urosome, dorsal; (c) antennule; (d) leg 5; (e) leg 6.



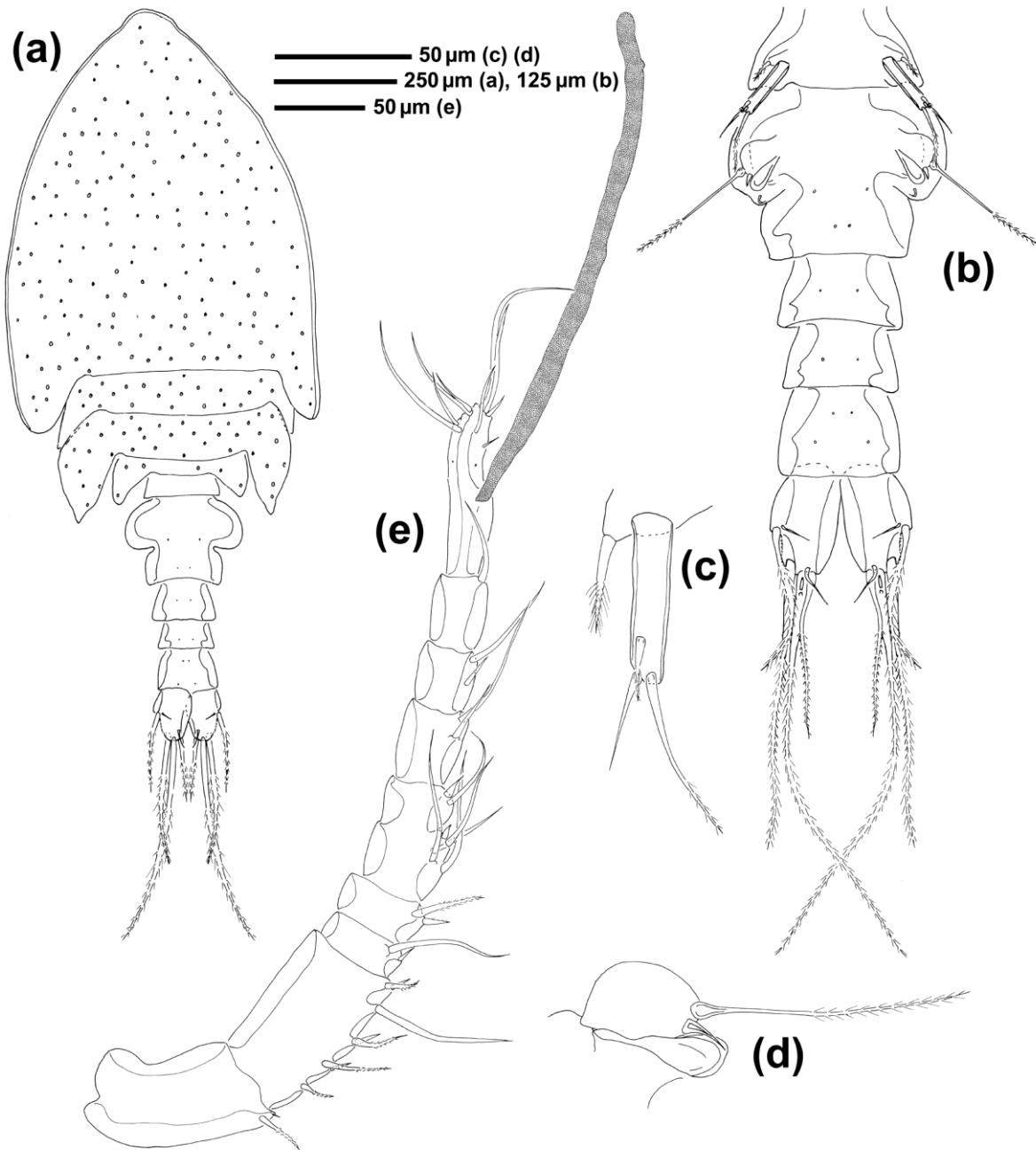


Fig. 10. *Sestropontius italicae* n. sp. (female): (a) habitus, dorsal; (b) urosome, dorsal; (c) leg 5; (d) leg 6; (e) antennule.

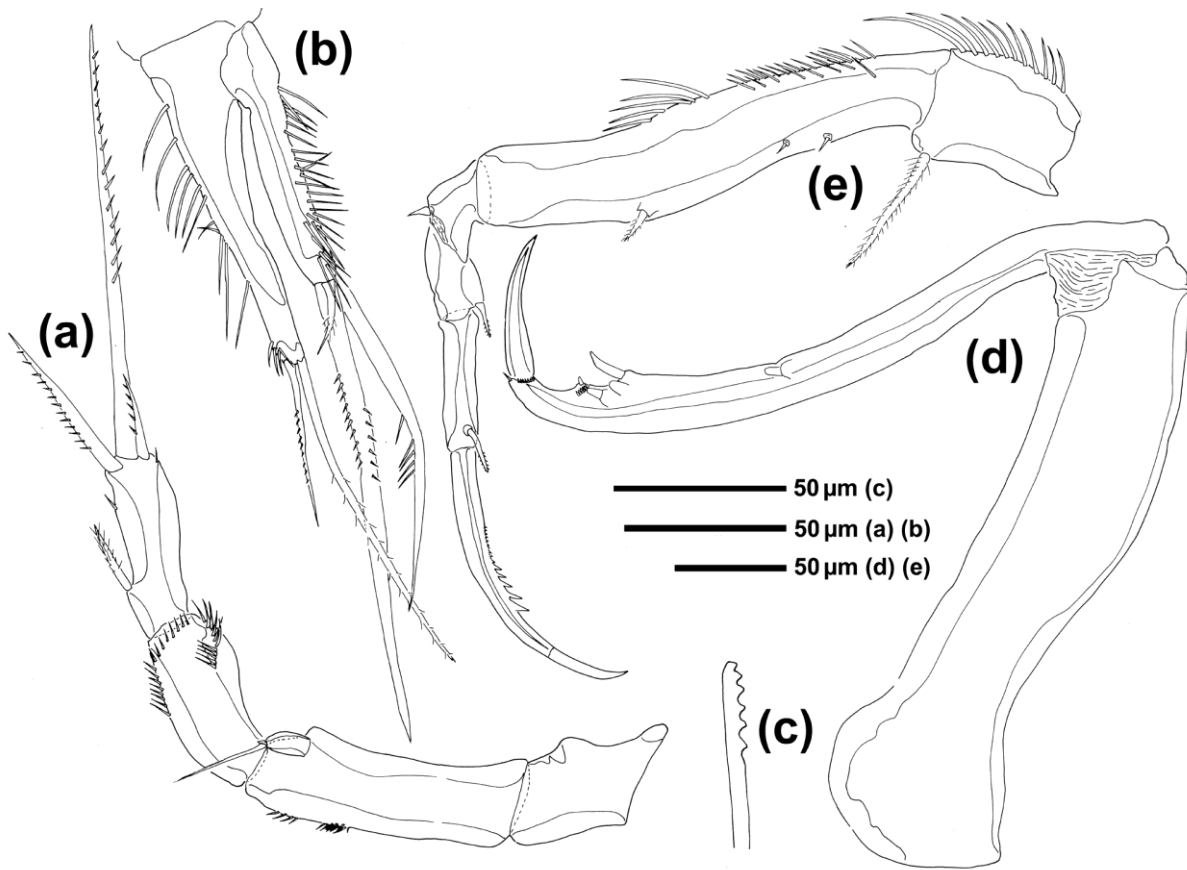


Fig. 11. *Sestropontius italicae* n. sp. (female): (a) antenna; (b) maxillule; (c) distal part of mandible, (d) maxilla; (e) maxilliped.

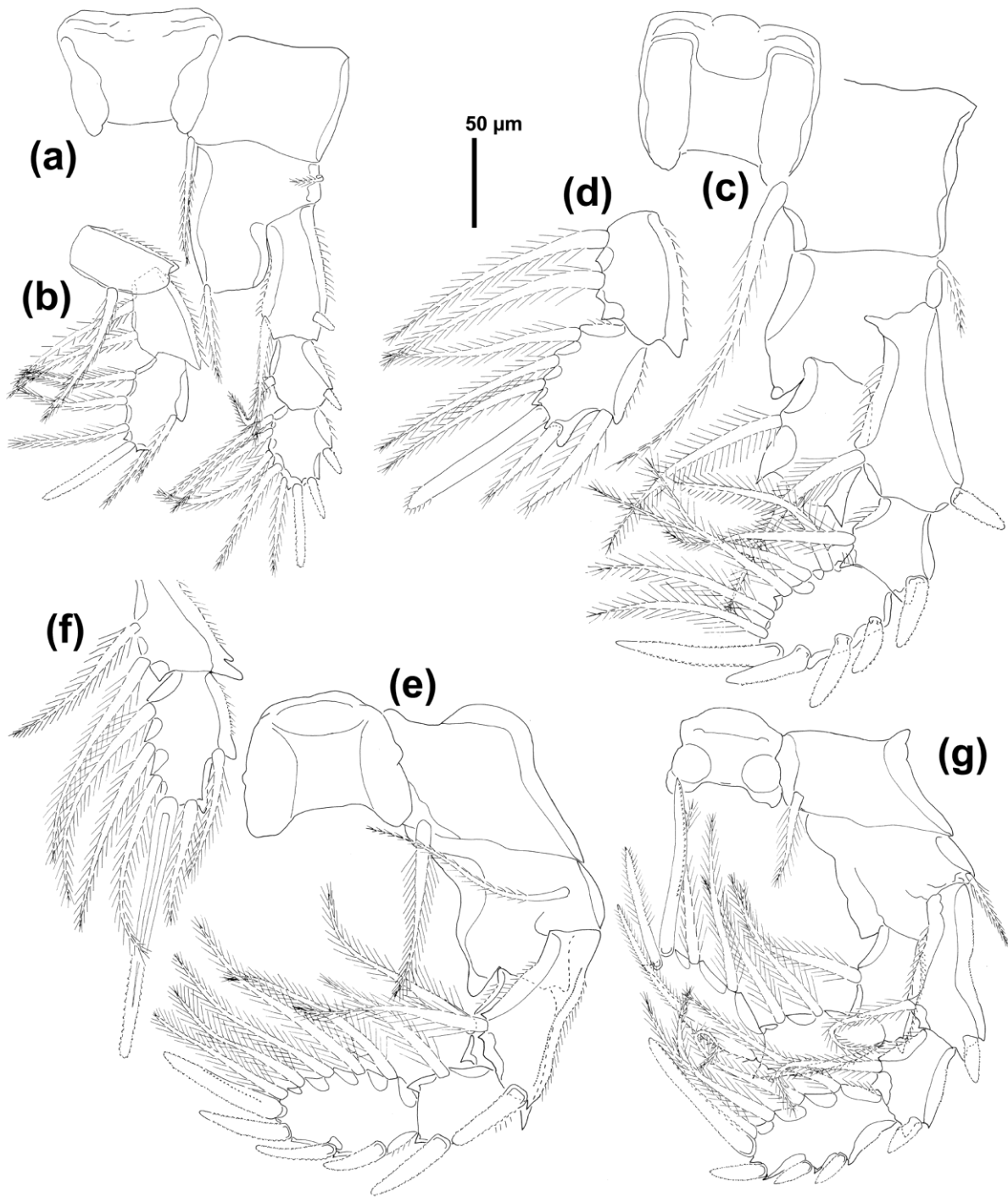


Fig. 12. *Sestropontius italicae* n. sp. (female): (a) leg 1; (b) endopod of leg 1; (c) leg 2; (d) two last endopodal segments of leg 2; (e) leg 3; (f) two last endopodal segments of leg 3; (g) leg 4.