

Supplementary file for: Piepjohn K. & Dallmann W.K. 2014. Stratigraphy of the uppermost Old Red Sandstone of Svalbard (Mimerdalen Subgroup. *Polar Research* 33. Correspondence: Winfried K. Dallmann, Norwegian Polar Institute, Fram Centre, NO-9296 Tromsø, Norway. E-mail: dallmann@npolar.no.



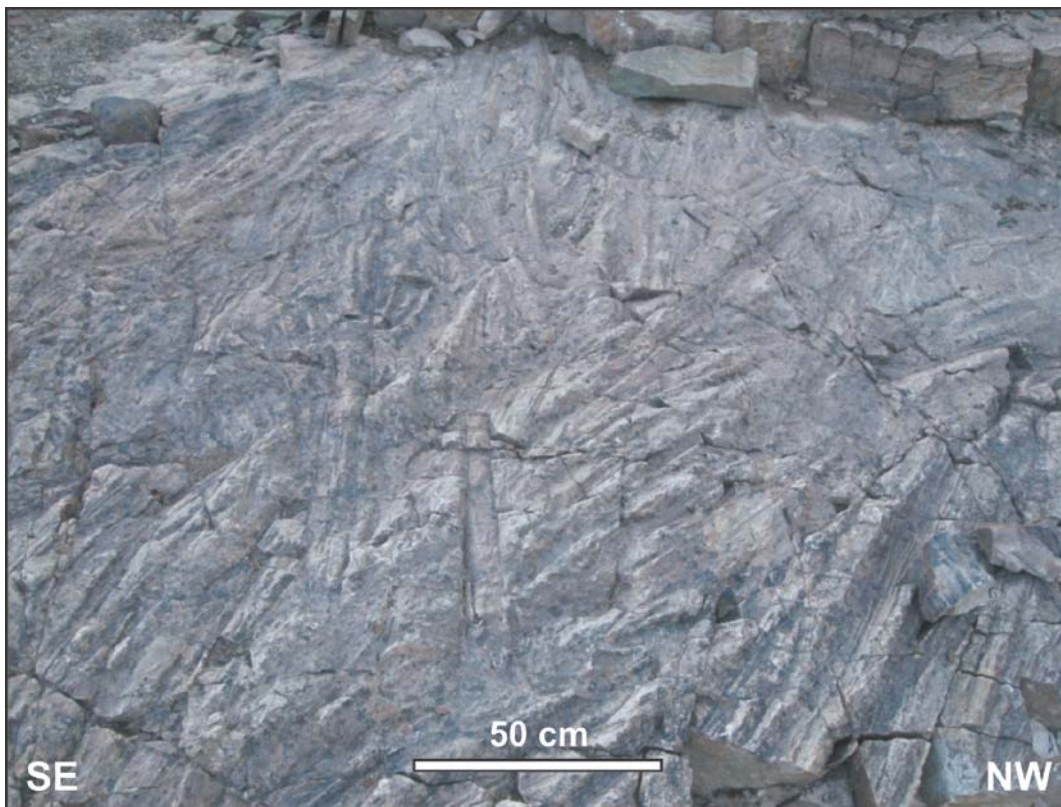
Supplementary Fig. S1. Light green sandstones of the Estheriahaugen Member (lower Tordalen Formation) with large sets of cross-bedding. (Photo by B. Michaelsen.)



Supplementary Fig. S2. Red- and brown-weathering, grey and dark green sandstones of the Fiskekløfta Member in the gorges of southern Tordalen (Tor Valley). (Photo by L. Reinhardt.)



Supplementary Fig. S3. Clay galls and uneven bedding surfaces within an intensely cleaved clay-silt matrix in unit 4 of the Fiskekløfta Members (Tordalen Formation) at the north cliff of Odinelva (Odin River). (Photo by B. Michaelsen.)



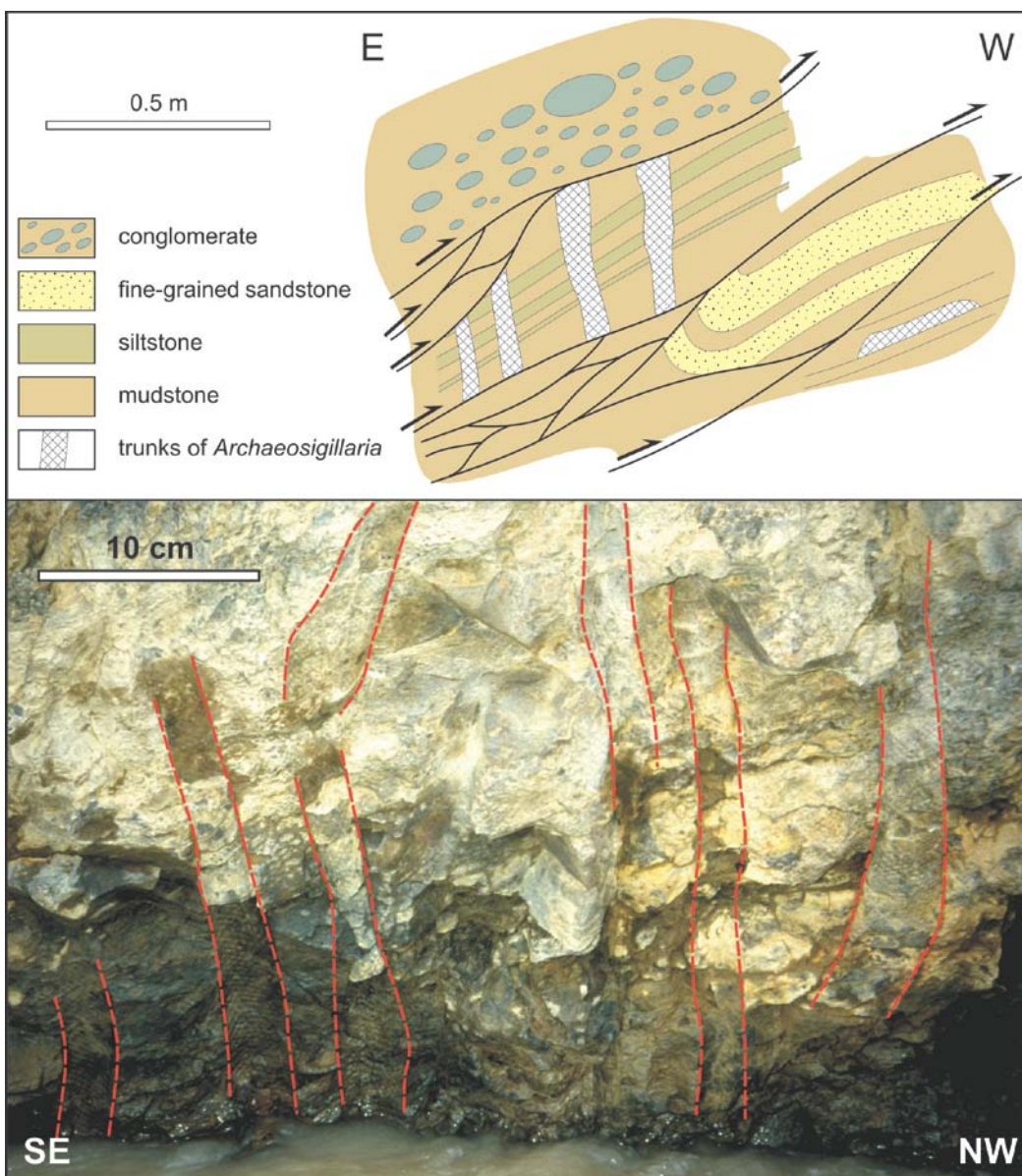
Supplementary Fig. S4. Bedding plane in the upper Tordalen Formation (Fiskekløfta Member) in the southern tributary valley of Fiskekløfta with masses of trunks of trees.



Supplementary Fig. S5. Green and grey, brownish-weathering mudstones and siltstones of the Plantekløfta Formation at the east cliff of Muninelva (Munin River) west of Reuterskiöldfjellet. (Photo by B. Michaelsen.)



Supplementary Fig. S6. Coarse-grained, dark grey, unstratified conglomerate of the Plantekløfta Formation with pebbles up to 20 cm in size at the west cliff of Muninelva (Munin River) east of Odinfjellet. (Photo by L. Reinhardt.)



Supplementary Fig. S7. Group of lycopside tree trunkss in life position within mudstones and siltstones of the Late Devonian Plantekløfta Formation in the low cliffs along the western bank of Muninelva (Munin River). (Redrawn from Piepjohn, Brinkmann et al. 1997.)