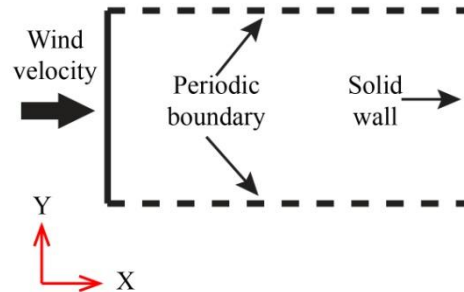
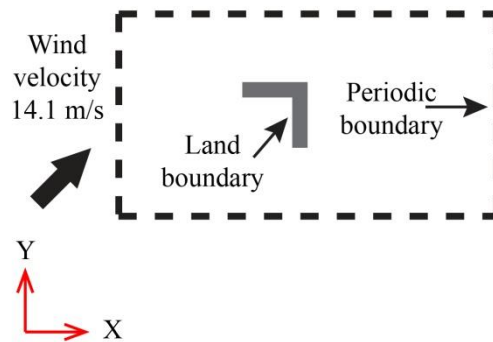


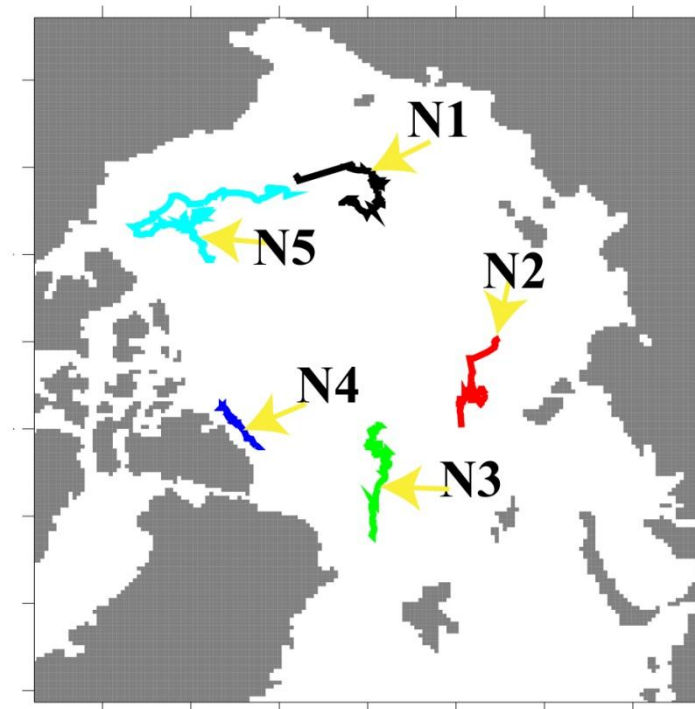
Supplementary file for: De Silva L.W.A., Yamaguchi H. & Ono J. 2015. Ice–ocean coupled computations for sea-ice prediction to support ice navigation in Arctic sea routes. *Polar Research* 34. Correspondence: Liyanarachchi Waruna Arampath De Silva, Kiban-tou 6H1, Graduate School of Frontier Sciences, University of Tokyo, 5-1-5 Kashiwanoha, Kashiwa 277-8561, Japan. E-mail: waruna@fluidlab.sys.t.u-tokyo.ac.jp



Supplementary Fig. S1. A schematic of the one-dimensional test set-up.



Supplementary Fig. S2. A schematic of the two-dimensional test set-up.



Supplementary Fig. S3. International Arctic Buoy Program trajectories from 1 January 2004 to 31 December 2004. Yellow arrows show the buoy trajectories used in scatterplots comparison in Fig. 8.