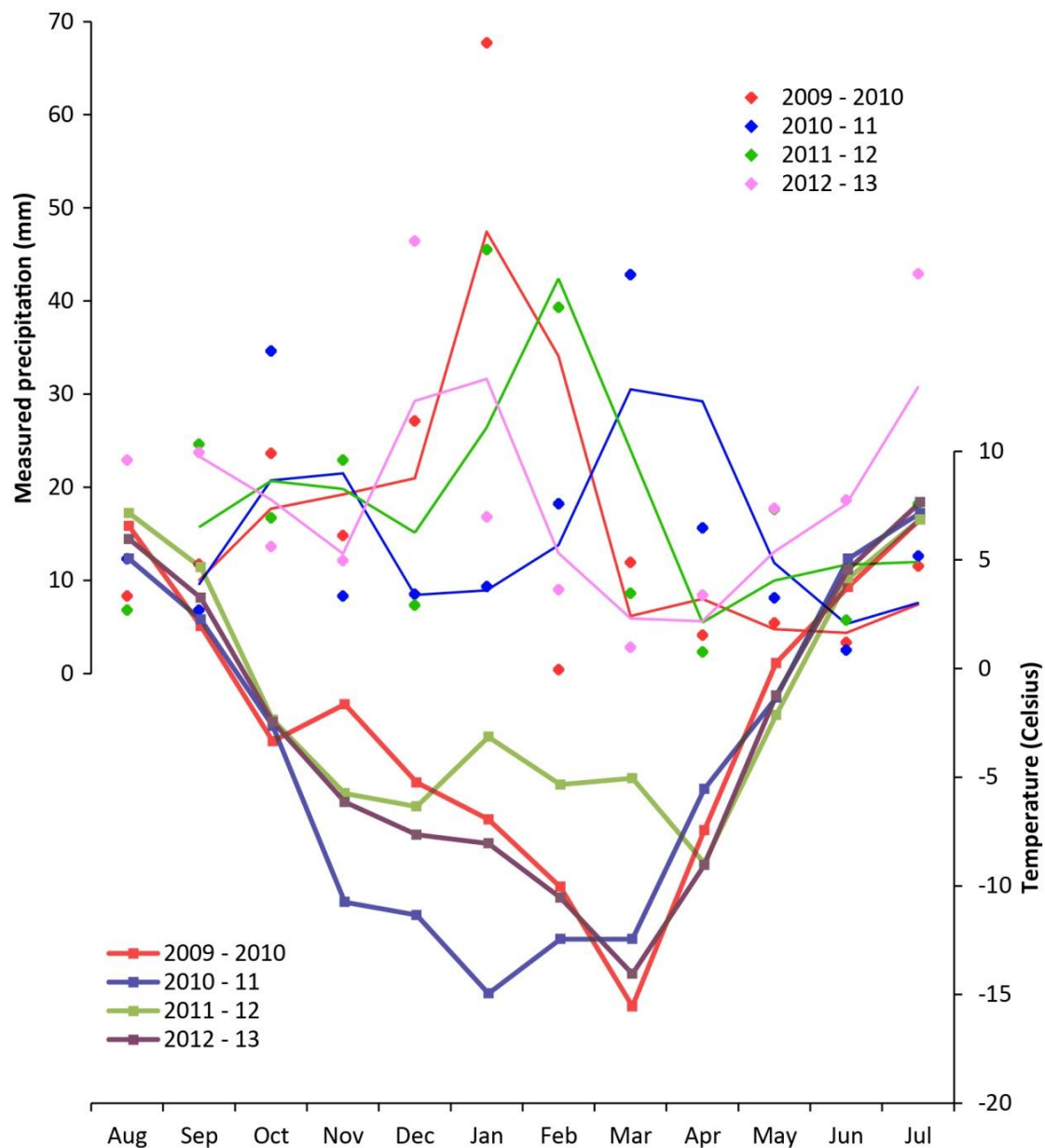


Supplementary file for: Sessford E.G., Bæverfjord M.G. & Hormes A. 2015. Search for tick-borne pathogens in the Svalbard Archipelago and Jan Mayen. *Polar Research* 34. Correspondence: Evangeline G. Sessford, The University Centre in Bergen, Department of Geosciences, Allégaten 55, NO-5007 Bergen, Norway. E-mail: evangeline.sessford@uib.no



Supplementary Fig. S1. Mean temperature and total precipitation and running mean measurements from Longyearbyen Airport for each month during the study period. Data set retrieved from Dr Ole Humlum as part of the Svalbard Meteorological Observations. Temperature and precipitation data can be viewed online at www.climate4you.com.



Supplementary Fig. S2. Images depicting the rapid removal of cliff sediments at Vestpynten during the spring melt season: (a) photograph taken 23 May 2012, with orange line showing the July edge as seen in (b), taken on 12 July 2012. Images taken by the automatic camera set up at Vestpynten by Emilie Guegan and the Sustainable Arctic Marine and Coastal Technology project WP6 concerning coastal technology.

Supplementary Table S1. Aerial image reference numbers and associated data.

Image number	Date	GSD ^a	Image type
s2011_25162_00430_13	25.07. 2011	20 cm	Microsoft Vexcel Ultracam Xp, aerial frame camera
s2011_25162_00702_13	17.08.2011	20 cm	Microsoft Vexcel Ultracam Xp, aerial frame camera
s2011_25181_00002_13	25.07.2011	10 cm	Microsoft Vexcel Ultracam Xp, aerial frame camera
s2009_13824_00049_13	02.08.2009	43 cm	Microsoft Vexcel Ultracam Xp, aerial frame camera

^aGround sample distance (provided by the Norwegian Polar Institute).