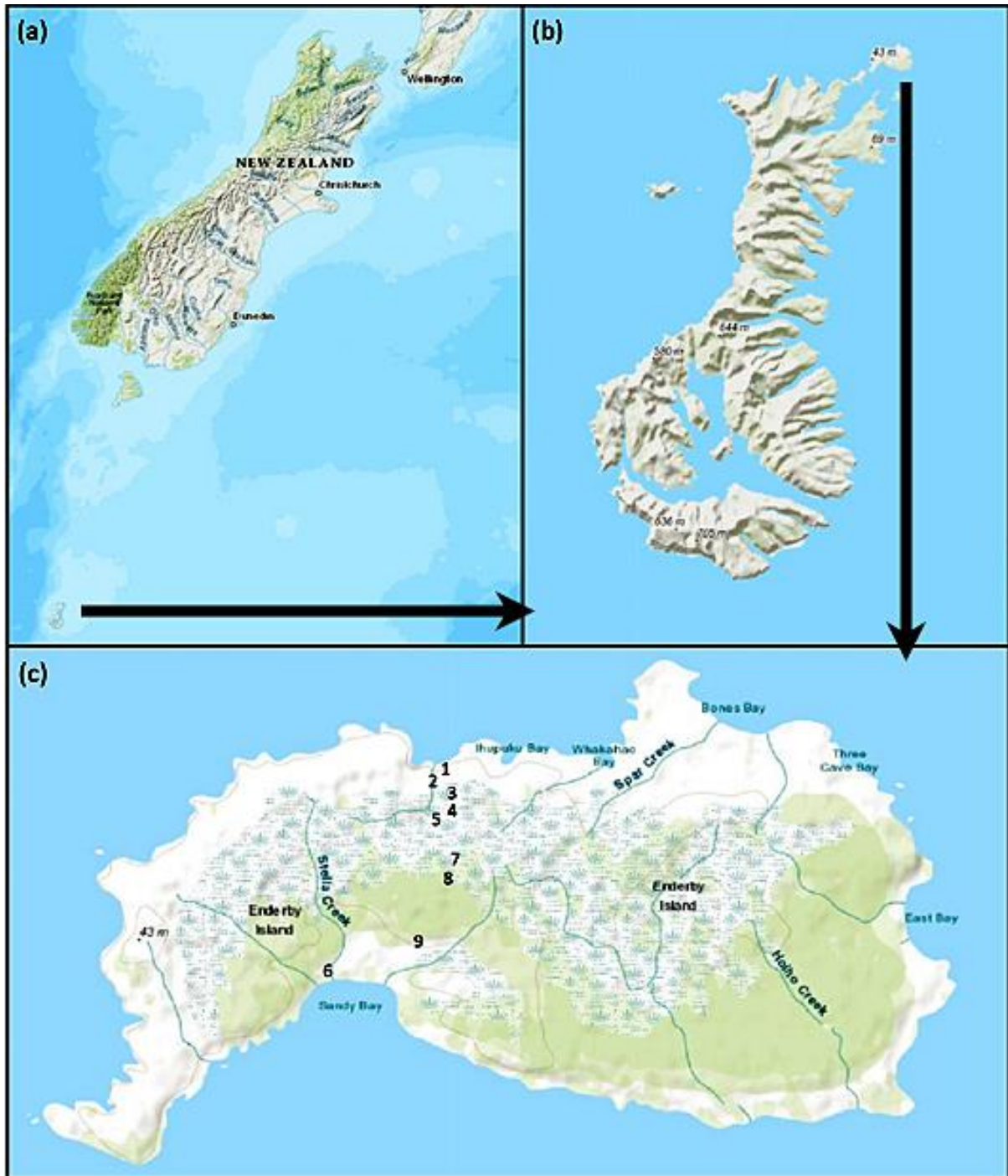
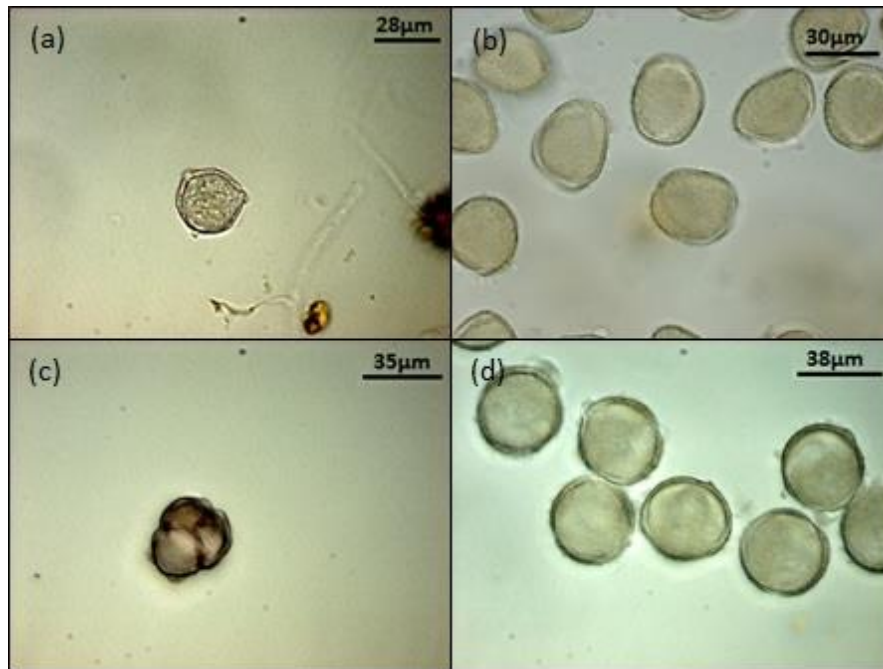


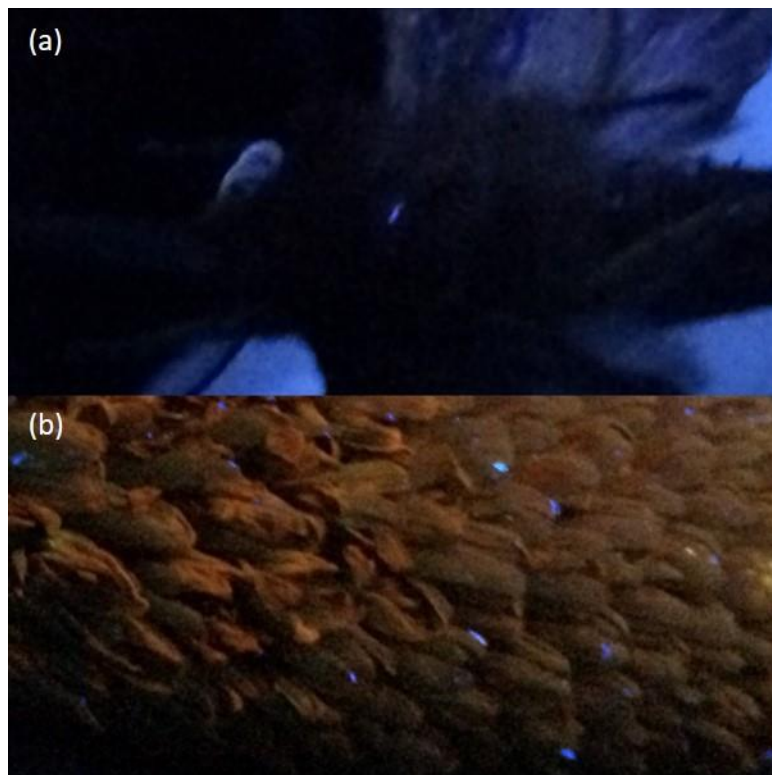
Supplementary material for: Buxton M.N., Anderson B.J., Hoare R. & Lord J.M. 2019. Are moths the missing pollinators in Subantarctic New Zealand? *Polar Research* 38. DOI: <https://doi.org/10.33265/polar.v38.3545> Correspondence: Max N. Buxton, Department of Botany, University of Otago, PO Box 56, 9054 Dunedin, New Zealand. E-mail: max.buxton@plantandfood.co.nz



Supplementary Fig. S1. (a) Location of the Auckland Islands in proximity to New Zealand; (b) location of Enderby Island within the Auckland Islands; and (c) Enderby Island. Numbers on the map in (c) refer to the approximate trapping locations. Image adapted from the US



Supplementary Fig. S2. Pollen grains removed from moth bodies: (a) *Acaena minor*, (b) *Bulbinella rossii*, (c) *Dracophyllum longifolium* var. *cockayneanum* and (d) *Gentianella concinna*.



Supplementary Fig. S3. (a) Blue pollen tracker located on the abdomen and proboscis of *Graphania erebia* and (b) blue pollen tracker located on a female *Bulbinella rossii* flower.