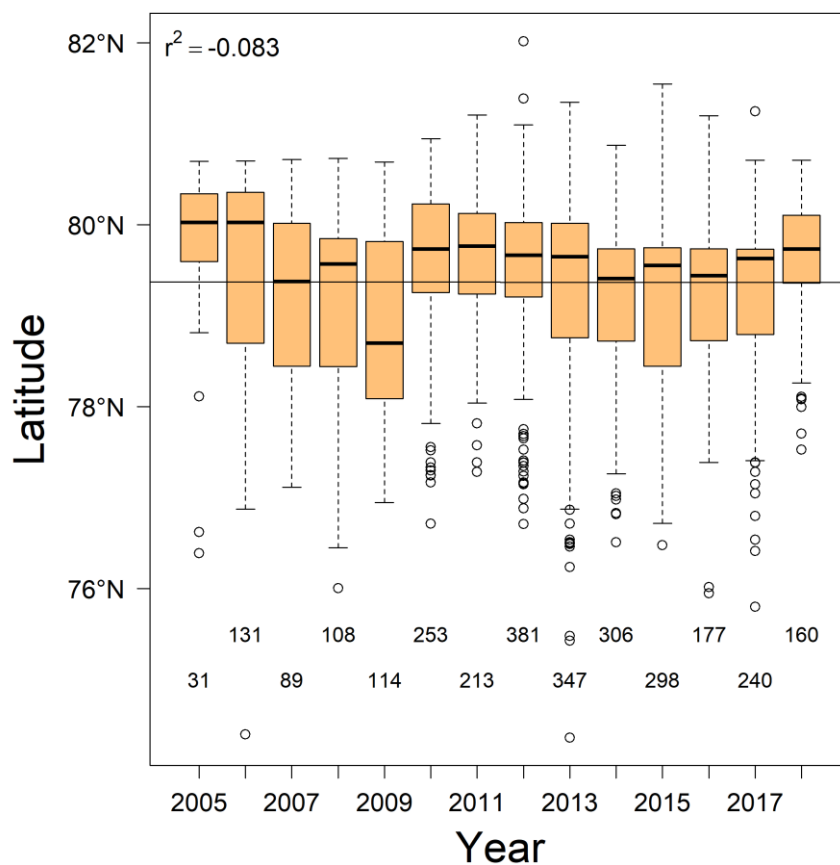
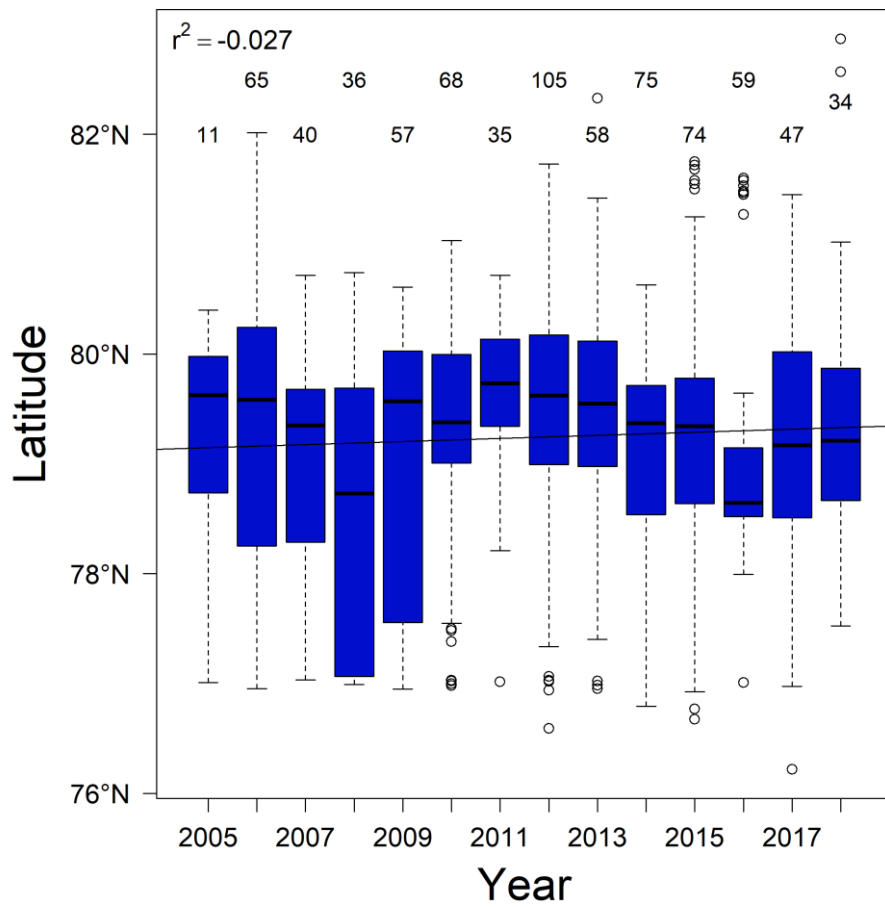


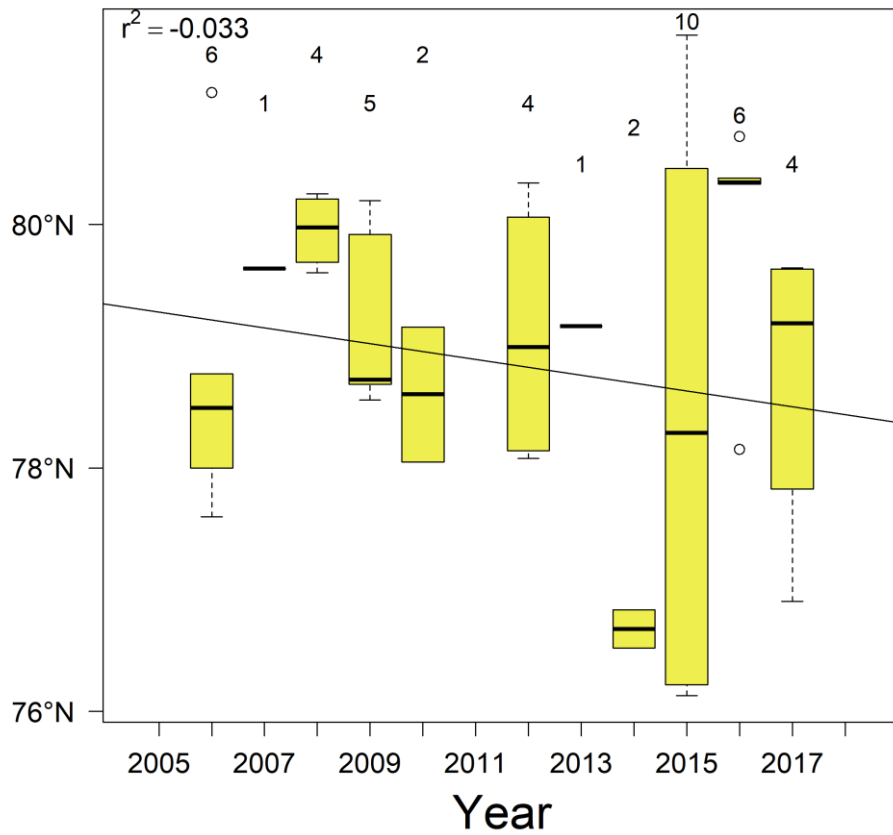
Supplementary material for: Bengtsson O., Hamilton C.D., Lydersen C., Andersen M. & Kovacs K.M. 2021. Distribution and habitat characteristics of pinnipeds and polar bears in the Svalbard Archipelago, 2005-2018. *Polar Research* 40. Correspondence: Kit M. Kovacs, Norwegian Polar Institute, Fram Centre, PO Box 6606 Langnes, NO-9296 Tromsø, Norway. E-mail: kit.kovacs@npolar.no.



Supplementary Fig. S1 Latitude of walrus observations recorded in the MMSDB during 2005-2018. Boxplots show values between the 25th and the 75th percentile within boxes that are divided by the median. Vertical lines outside the boxes extend to the maximum and the minimum values up to 1.5 times higher or lower than the upper and lower quartile. Circles represent outliers, more than 1.5 times higher or lower than the upper and lower quartile. Linear regression of the means for each year are displayed as a black line together with the r^2 value for the regression in the top left corner. Numbers above or below error bars depict sample sizes.



Supplementary Fig. S2 Latitude of ringed seal observations recorded in the MMSDB during 2005-2018. Boxplots show values between the 25th and the 75th percentile within boxes that are divided by the median. Vertical lines outside the boxes extend to the maximum and the minimum values up to 1.5 times higher or lower than the upper and lower quartile. Circles represent outliers, more than 1.5 times higher or lower than the upper and lower quartile. Linear regression of the means for each year are displayed as a black line together with the r^2 value for the regression in the top left corner. Numbers above or below error bars depict sample sizes.



Supplementary Fig. S3 Latitude of hooded seal observations recorded in the MMSDB during 2005-2018. Boxplots show values between the 25th and the 75th percentile within boxes that are divided by the median. Vertical lines outside the boxes extend to the maximum and the minimum values up to 1.5 times higher or lower than the upper and lower quartile. Circles represent outliers, more than 1.5 times higher or lower than the upper and lower quartile. Linear regression of the means for each year are displayed as a black line together with the r^2 value for the regression in the top left corner. Numbers above or below error bars depict sample sizes.